

# A national database for monitoring of Johne's disease in New Zealand farmed deer

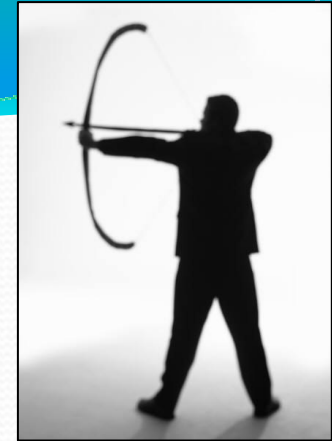
**Jaimie Hunnam**

Johne's Management Limited Project Manager

(0800) 456 453

# Database: Beginnings...

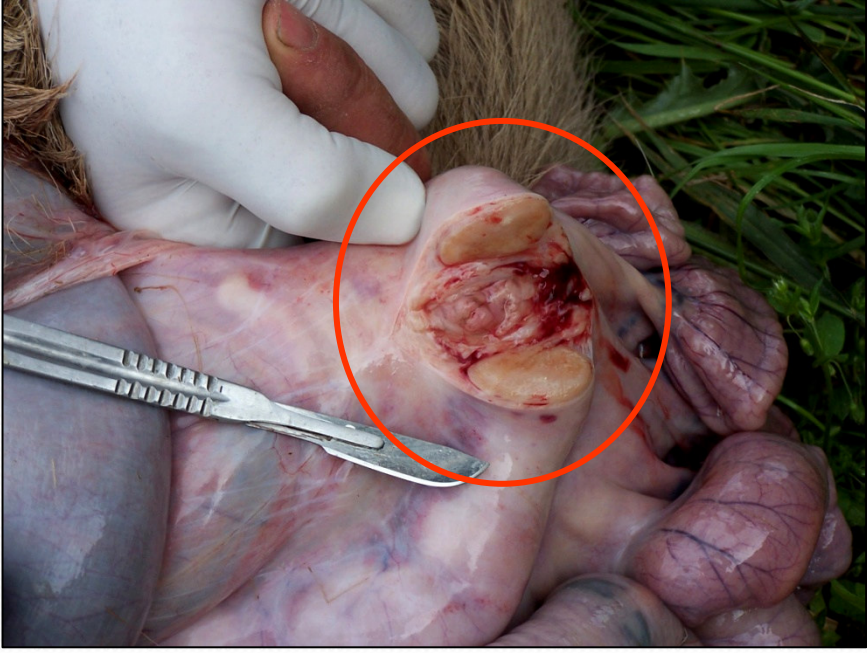
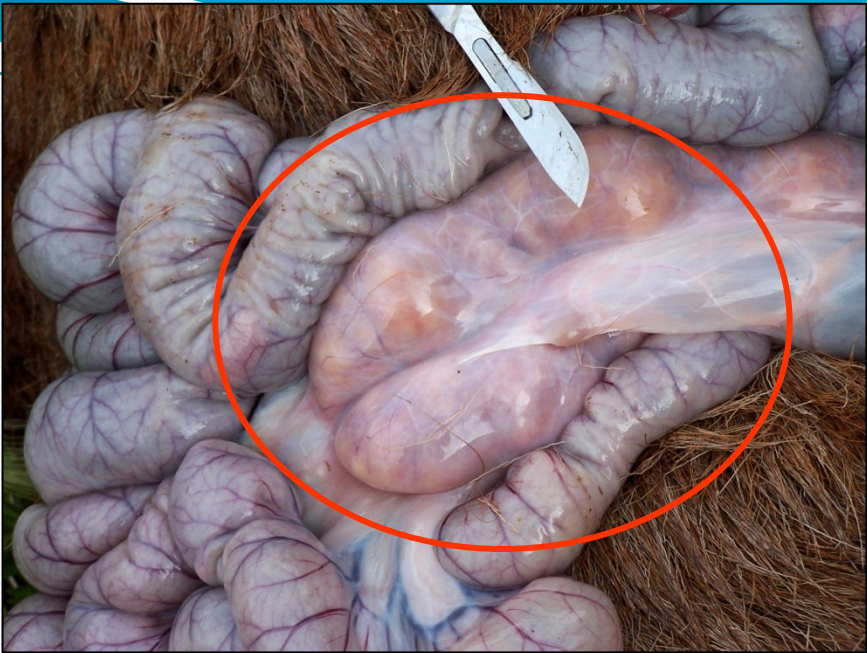
- **Massey University and Johne's Research Group (JRG)**
  - PhD: "The epidemiology of Johne's Disease in New Zealand farmed deer"
- **Database aims:**
  - National and regional **prevalence** levels
  - Decrease prevalence of **JD lesions** at slaughter
  - Monitoring of **control programs/intervention studies**



# Database Aim...

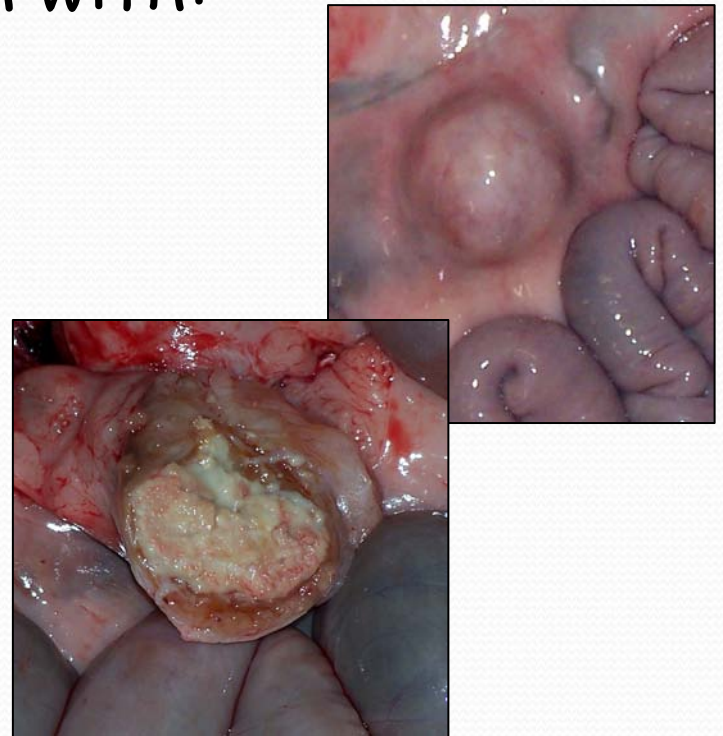
*"To grow a Database for the monitoring of Johne's disease in deer that provides a cost-effective tool in reducing the risk and cost of Johne's disease in deer to New Zealand's markets"*

- Nationwide recording of lesions due to infection with *MAP* in deer
- All NZ processors:
  - Per carcass voluntary contribution
- Privacy and confidentiality



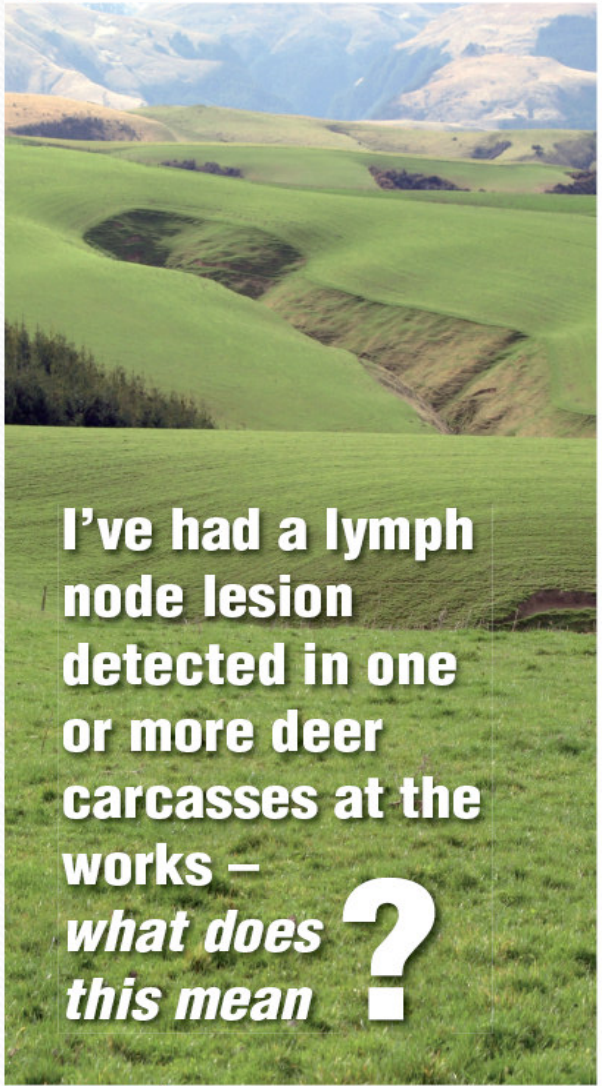
## Why is a JML lesion "JD-suspect??"

- *MAP* lesions are grossly indistinguishable from lesions due to infection with:
  - *M. bovis*
  - *M. avium*
  - environmental Mycobacteria
  - Actinobacillus
  - Internal parasite burden etc



CONFIDENTIAL

20 February 2009  
 Address 1  
 Address 2  
 Address 3  
 Address 4



**I've had a lymph node lesion detected in one or more deer carcasses at the works – what does this mean ?**

**Johne's Suspect Lesions Notification - FarmID FarmID**

**Background**

Deer processors have established a national database to inform suppliers with deer identified during processing with abnormal lesions likely to be caused by the bacteria *Mycobacterium paratuberculosis* (Johne's disease). The purpose of the database is to reduce the possible market risk posed by Johne's disease and the loss to deer farmers resulting from the presence of the disease in their herd.

The national Johne's database shows that abnormal lesions suspicious for Johne's disease have been detected in the following lines of deer sent by you/your farm or killed in your name between 01/08/08 and 31/12/08.

| <b>Plant</b>         | <b>Date processed</b>  | <b>Number in line</b> | <b>Number of lesions</b> |
|----------------------|------------------------|-----------------------|--------------------------|
| <b>MeatWorksName</b> | <b>DateOfSlaughter</b> | <b>Number In Line</b> | <b>Number Of Lesions</b> |
|                      |                        |                       |                          |
|                      |                        |                       |                          |

**What to Do**

Research has shown that many such lesions are suspicious for JD however we recommend you carry out a herd test to confirm the presence of Johne's disease. We recommend you review your on-farm control program to reduce the risk of Johne's disease impacting on your herd. If you do not have a program in place you should discuss control options with your veterinarian.

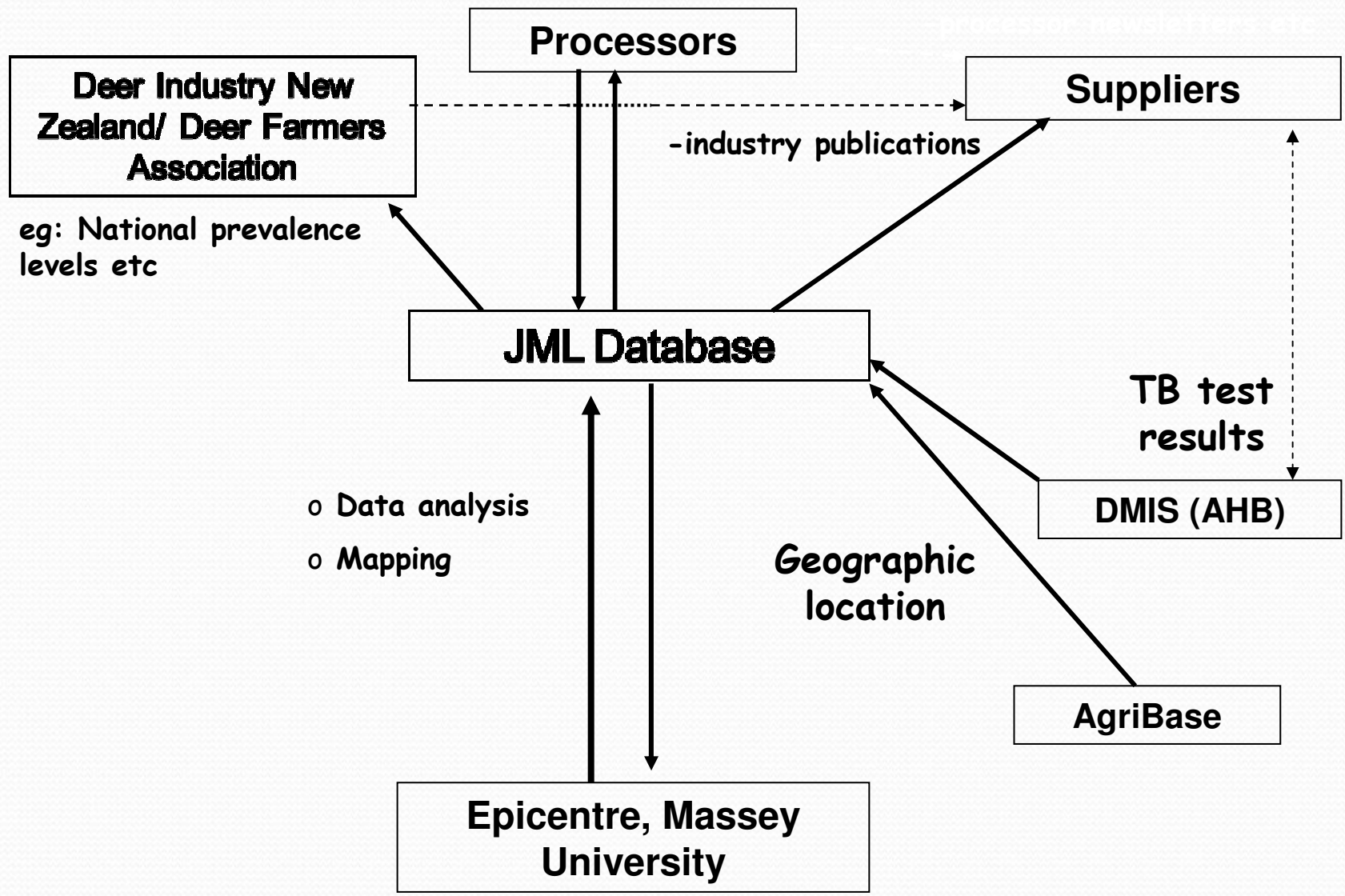
JML will, in the near future, establish a pool of accredited Johne's veterinarians who will be trained to assist and develop a Johne's plan specifically tailored for your farm in conjunction with you and your veterinarian should you wish.

This letter is confidential and the information contained is not available to any other party without permission of the owner of the deer listed. If you require further information, such as individual animal ear tag numbers, please contact me at on 0800 456 453.

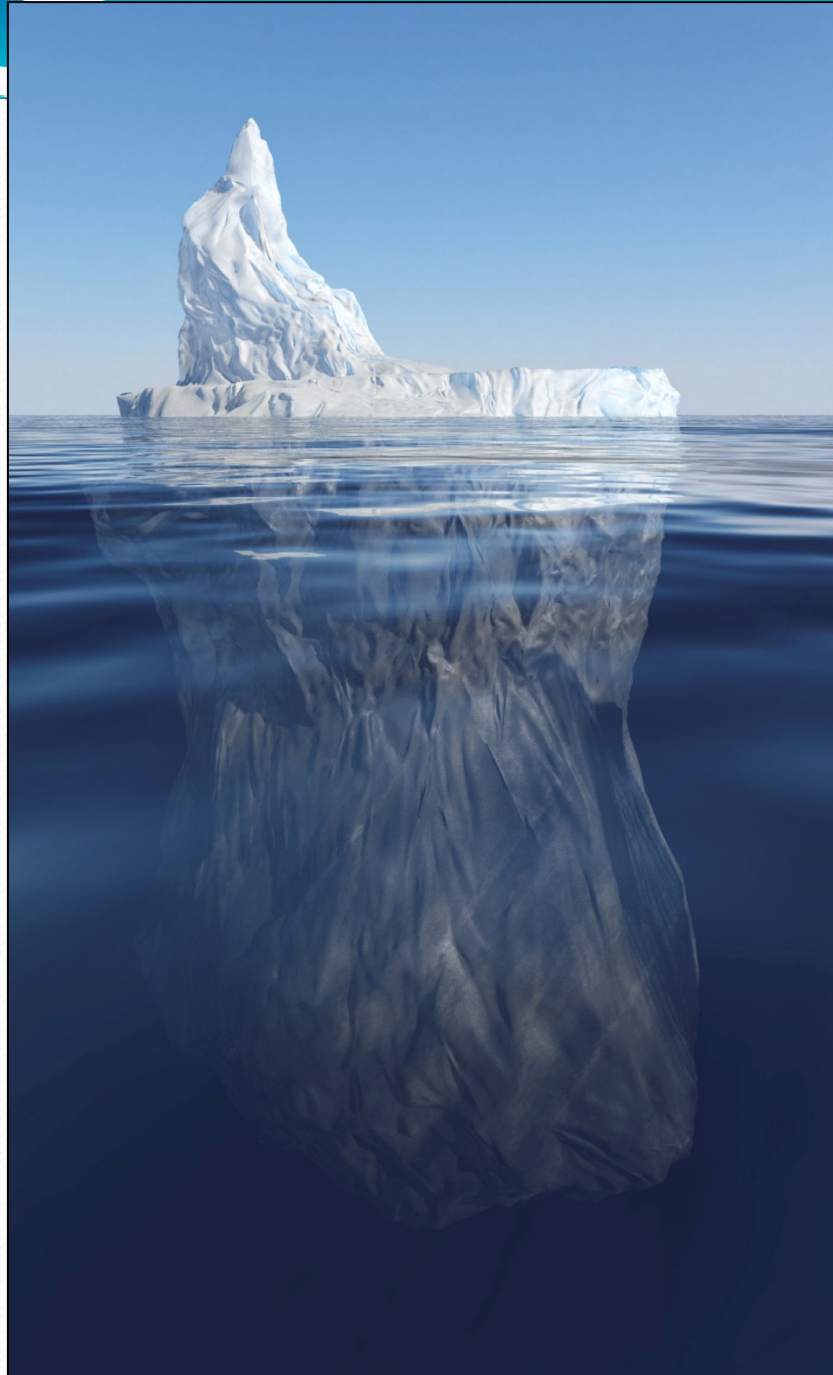
Signed

**Jaimie Hunnam**  
**Project Manager**  
**Johne's Management Limited**

# Database: Information Feedback



A JML  
notification  
letter = "the  
tip of the  
iceberg"





**Johne's  
Management Ltd**

JML-trained  
specialist  
consultants:  
June 2009  
- farm-specific  
management plan



**Johne's  
Management Ltd**

## **Johne's Disease - are your deer infected?**



**To find out, see  
the JML site at  
the South Island  
Agricultural  
Field Days  
or call (0800) 456 453**

**SOUTH ISLAND AGRICULTURAL FIELD DAYS**  
FARMING FOR THE FUTURE - LINCOLN: MARCH 25-27 2009